

Qfix

Self-Drilling TTM Screw

6.3mm Self Drilling TTM Screw

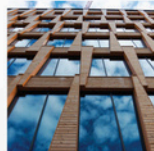
Fixing timber panels to metal substructures: up to 8 mm steel.

■ MADE
■ IN
■ GERMANY





6.3mm Self-Drilling TTM Screw



TECHNICAL DATA



AnchorMark TTM - Timber to Metal Screws

Art. No. [Ruspert Coated]	Diameter [mm]	Length [mm]	Usable Length [mm]	KD Head [mm]	Head Height [mm]	Drive	Type	Qty [pce]
663570055	6,3	55	55	18,8	1,4	SIT®30	Timber to Metal (TTM)	250
663570065		65	65				Timber to Metal (TTM)	250
663570080		80	80				Timber to Metal (TTM)	250
663570120		120	120				Timber to Metal (TTM)	100

Fixing timber panels to metal substructures: up to 8 mm steel.

Our TTM Timber to Metal Screws are the perfect fastener to fix timber to metal under-constructions without pre-drilling. Perfect for industrial use.

The advantages of these screw are:

- Self drilling screw with SIT® Drive (up to 8mm metal).
- Ruspert coating for excellent corrosion protection.

BUILDING MATERIALS:

Merbau, Spotted Gum, Blackbutt, Tallowwood, Stringybark, Karri , Sydney Bluegum, Jarrah, Ironbark, Tasmanian Oak. Victorian Ash, Grey Box and Oak to Steel.